

APPENDIX "EE"
LEGACY AT OREM



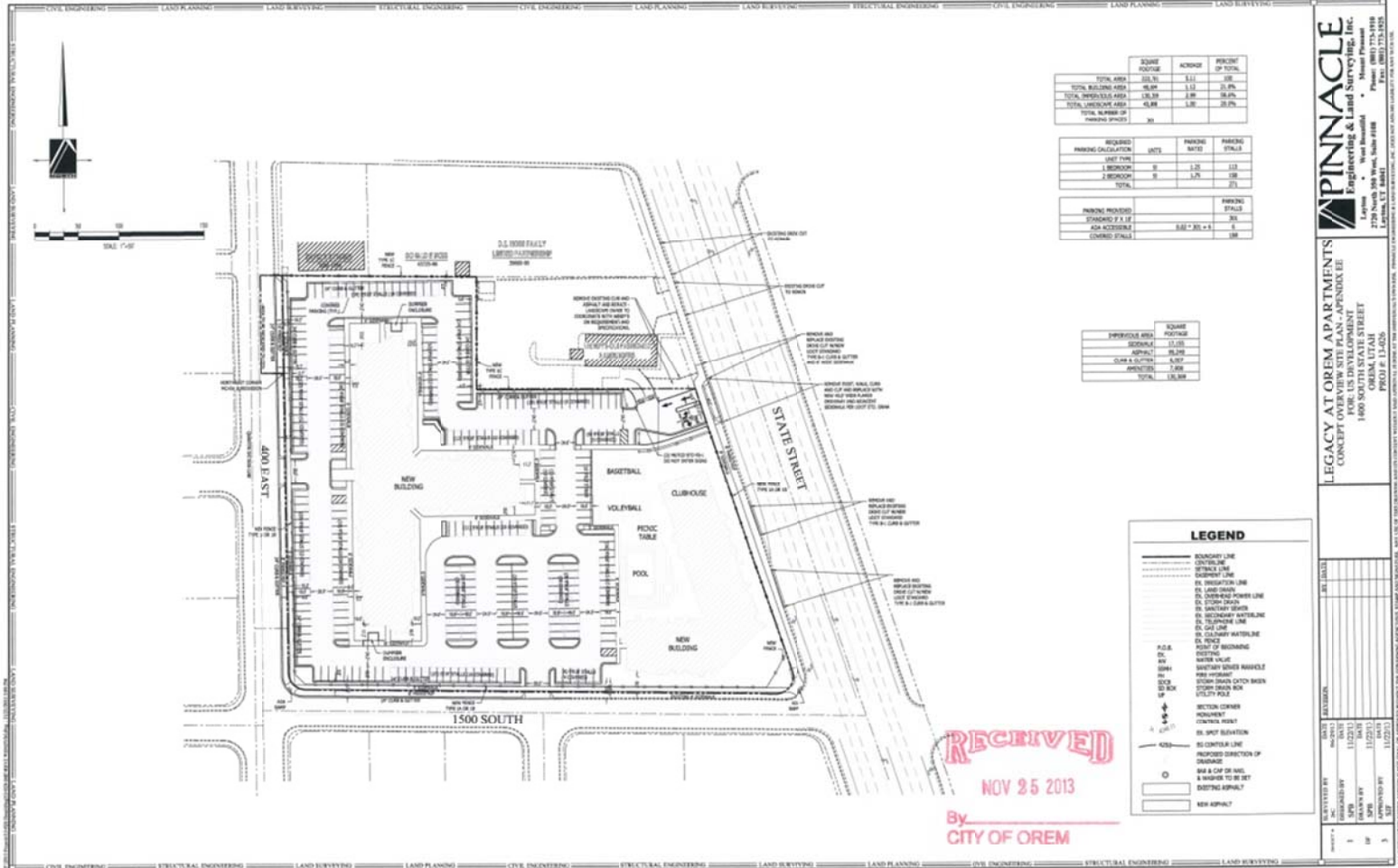
- LEGACY AT OREM**
- 180 TOTAL UNITS
 - +/- 90 1 BEDROOM UNITS
 - +/- 90 2 BEDROOM UNITS
 - OVERSIZED BALCONIES
 - CLUBHOUSE
 - EXERCISE FACILITY
 - SWIMMING POOL
 - PICNIC TABLES
 - VOLLEYBALL AREA
 - COURTYARDS
 - FOUR STORY INTERNAL ACCESS
 - ELEVATORS
 - INTERNAL TRASH CHUTES AT EACH FLOOR
 - COVERED PARKING
 - ENHANCED LANDSCAPES



LEGACY AT OREM

11.23.13

APPENDIX "EE" LEGACY AT OREM



	SQUARE FOOTAGE	ACRES	PERCENT OF TOTAL
TOTAL AREA	121.76	3.11	100%
TOTAL BUILDING AREA	48.88	1.37	40.16%
TOTAL IMPERVIOUS AREA	126.33	3.58	104.56%
TOTAL UNIMPAVED AREA	41.88	1.18	34.33%
TOTAL NUMBER OF PARKING SPACES	31		

PARKING CALCULATION	UNITS	PARKING RATES	PARKING STALLS
OFFICE	10	1.0	10
1 BEDROOM	10	1.0	10
2 BEDROOM	10	2.0	20
TOTAL			40
PARKING PROVIDED			31
STANDARD 7.5 LF			1
ADA ACCESSIBLE		5.0 FT X 8 FT	1
CHANGING STALLS			18

	SQUARE FOOTAGE
IMPERVIOUS AREA	126.33
PERMEABLE	38.14
ASPHALT	38.14
GRAVEL	0.00
CONCRETE	0.00
TOTAL	164.47

LEGEND

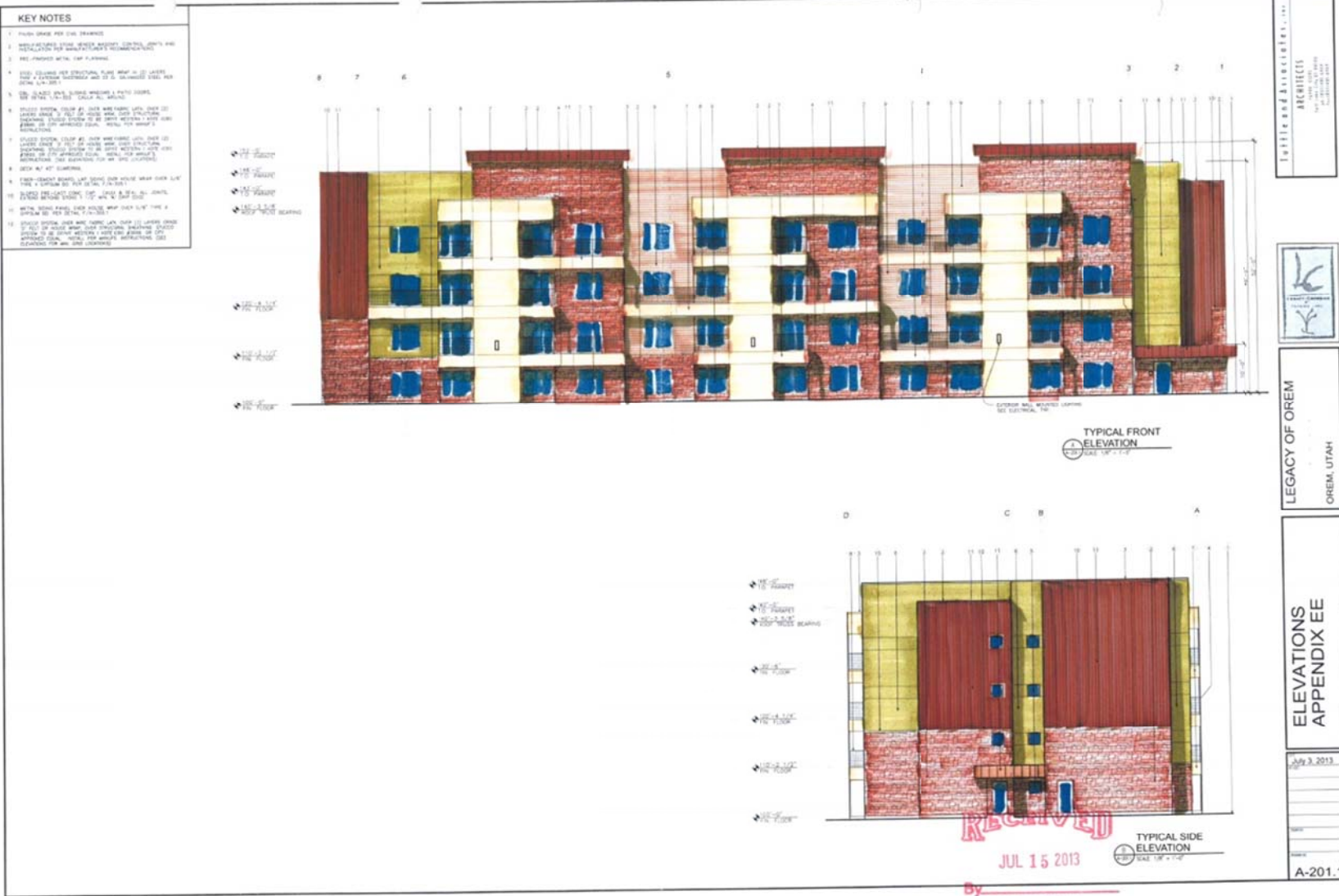
- BOUNDARY LINE
- CONTROL LINE
- OFFSET LINE
- CENTERLINE
- EL. DIRECTION LINE
- EL. LINE DASH
- EL. OVERHEAD POWER LINE
- EL. UNDERGROUND
- EL. SANITARY
- EL. MECHANICAL WATERLINE
- EL. TO CORNER DIM
- EL. CURB LINE
- EL. CALDWAY CENTERLINE
- EL. POINT
- POINT OF BEGINNING
- EL. POINT
- MARKER VALUE
- SANITARY SINKER MANHOLE
- MANHOLE
- STEAM DRAIN CATCH BASIN
- STEAM DRAIN BOX
- BOX
- UTILITY POLE
- SECTION CORNER
- MONUMENT
- CORNER MARK
- EL. SPOT ELEVATION
- EL. CORNER LINE
- INDICATED DIRECTION OF
DRAINAGE
- MAN & CHD OR MAN
& SINKER TO BE SET
- DRAINING ASPHALT
- MAN ASPHALT

PINNACLE
 Engineering & Land Surveying, Inc.
 2725 South 300 West, Suite 2000
 Layton, UT 84041
 Phone: (801) 775-9198
 Fax: (801) 775-8325

LEGACY AT OREM APARTMENTS
 CONCEPT OVERVIEW SITE PLAN - APPENDIX EE
 FOR US DEVELOPMENT
 1400 SOUTH 1500 WEST
 OREM, UTAH
 PROJECT # 13-626

DATE	DESCRIPTION	BY	DATE
11/22/13	ISSUED FOR PERMIT	SPB	11/22/13
11/22/13	ISSUED FOR PERMIT	SPB	11/22/13
11/22/13	ISSUED FOR PERMIT	SPB	11/22/13

APPENDIX "EE" LEGACY AT OREM



APPENDIX "EE"
LEGACY AT OREM



RECEIVED

APR 9 9 2013

By _____
CITY OF OREM

USD

DEVELOPMENT-CONSTRUCTION-MANAGEMENT

From the Ground Up

Tufte and Associates, inc.

ARCHITECTS

1648 E 3300 S, SLIC, UT 84106
www.tufte.net
ph (801)485-6464
fax (801)485-6969