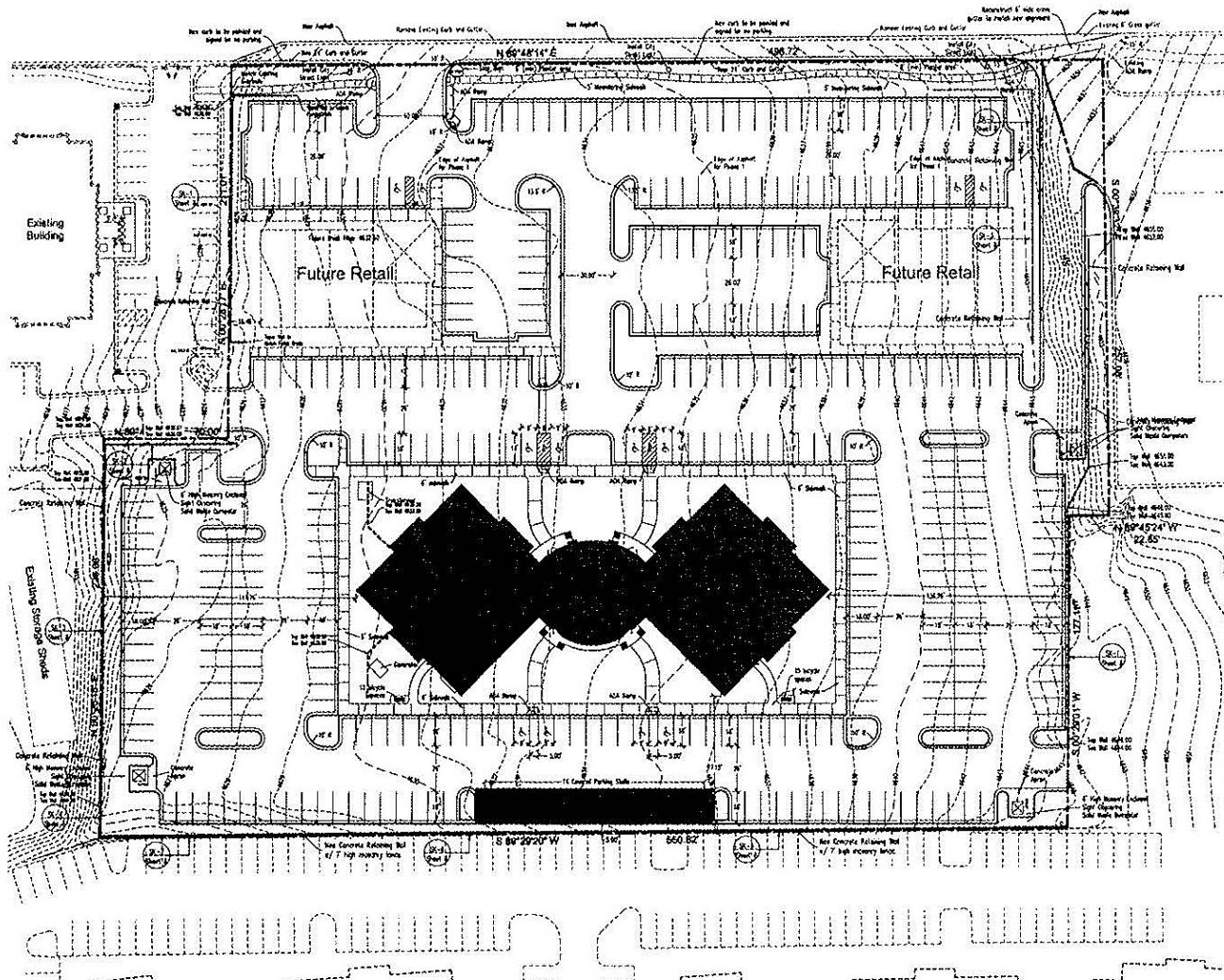


APPENDIX "L"  
 PD-28 Zone, North Pointe Plaza

# Security Metrics Building



1600 North Street



**Developer:**

Skyline Development  
 1015 South Green Boulevard  
 Orem, Utah 84058  
 801-228-8005

**Engineer:**

Outley and Associates, Inc.  
 333 East 1200 South  
 Orem, Utah 84058  
 801-224-1252

**Site Data:**

Zone = HS  
 Total Area = 230,016 sq.ft. 5.28 acres

Building Area (Total Gross Area) = 94,472 sq.ft.  
 Gross Leasable Area = 77,500 sq.ft.

Future Retail Area = 17,250 sq.ft. (gross)  
 15,525 sq.ft. (net)

**Parking Calculations =**

Total parking shown = 345 stalls  
 Total parking required 500 sq.ft. = 372 stalls

	Sq. Feet	Acres	Percent of total
Total Area	230,016	5.28	100
Total Building / PAD Area	94,500	0.79	15
Total Retail Building Area	134,454	3.08	54
Total Impervious Area	189,004	3.88	75
Total Landscaped Area	81,032	1.40	27

Tabulation Table



Appendix "L"



NORTH ELEVATION  
SCALE: 1/4" = 1'-0"

OFFICE BUILDING SCHEMATIC  
OREM, UTAH  
8 NOVEMBER 2006



RECEIVED  
NOV 06 2006  
BY:  
CITY OF OREM